

# MAP DISPLAY

## MAIN ENTRANCE

- A1 ENTRANCE 1
- A2 ENTRANCE 2
- A3 ENTRANCE 3
- A4 ENTRANCE 4

## FESTIVAL SERVICES

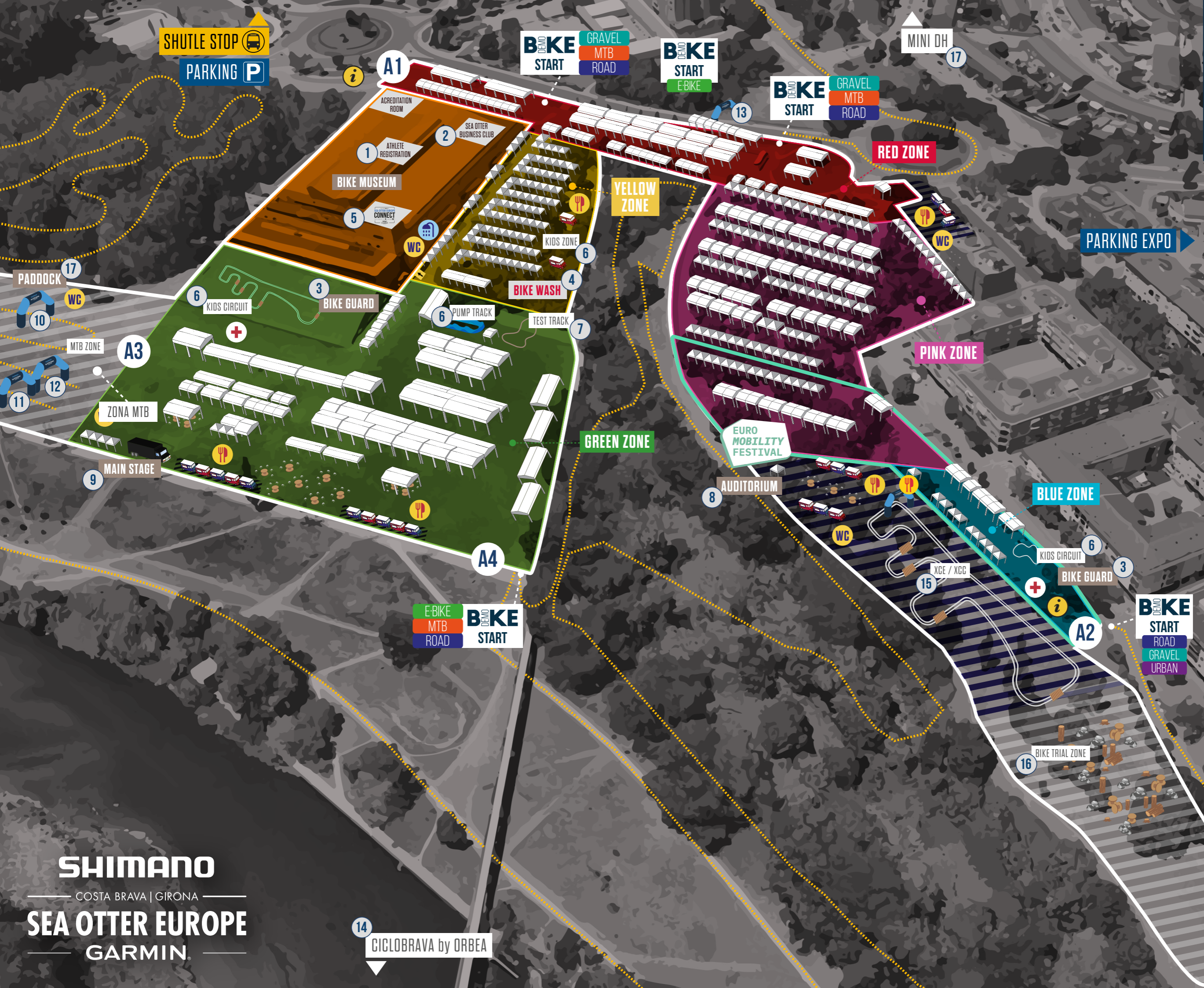
- i INFORMATION DESK
- 1 ATHLETE REGISTRATION
- 2 SEA OTTER BUSINESS CLUB
- 3 BIKE GUARD
- 4 BIKE WASH by PRORIDE
- 🍴 FOOD TRUCK
- 🚿 SHOWERS
- WC WC
- 🚌 SHUTTLE STOP

## ACTIVATION ZONE

- 5 SEA OTTER EUROPE CONNECT
- 6 KIDS ACTIVITIES
- 7 TEST TRACK
- 8 AUDITORIUM
- 9 MAIN STAGE

## SPORTIVE EVENTS

- 10 SHIMANO SUPER CUP MASSI  
SUPER CUP YOUTH  
MTB CLASSIC
- 11 SCOTT MARATHON BTT  
HERO UCI MTB WORLD CUP (FINISH)  
LA TRAMUN SEA OTTER EUROPE (FINISH)
- 12 226ERS UCI GRAVEL WORLD SERIES (FINISH)  
CONTINENTAL GRAVEL RIDE TOUR (FINISH)
- 13 CONTINENTAL GRAVEL RIDE TOUR (START)
- 14 CICLOBRAVA by ORBEA
- 15 ELIMINATOR SERIES  
SHORT TRACK  
CAMPEONATO ESPAÑA XGE
- 16 BIKE TRIAL ZONE
- 17 MINI DH
- 18 PADDOCK



SHUTTLE STOP  
PARKING P

BKE DEMO  
START  
GRAVEL  
MTB  
ROAD

BKE DEMO  
START  
E-BIKE

BKE DEMO  
START  
GRAVEL  
MTB  
ROAD

MINI DH  
17

RED ZONE

PARKING EXPO

PINK ZONE

GREEN ZONE

BLUE ZONE

A4

E-BIKE  
MTB  
ROAD  
BKE DEMO  
START

BKE DEMO  
START  
ROAD  
GRAVEL  
URBAN

14  
CICLOBRAVA by ORBEA

SHIMANO  
COSTA BRAVA | GIRONA  
SEA OTTER EUROPE  
GARMIN